

**Retail, Consumer Goods &
Hospitality**

**Navigating uncertainty
in the retail, consumer
goods and hospitality
industries**

Workday Elevate 2023



Safe Harbour Statement



This presentation may contain forward-looking statements for which there are risks, uncertainties, and assumptions. Forward-looking statements may include any statements regarding strategies or plans for future operations; any statements concerning new features, enhancements or upgrades to our existing applications or plans for future applications; any projections of revenues, gross margins, earnings, or other financial items; and any statements of expectation or belief. Forward-looking statements are based only on currently available information and our current beliefs, expectations, and assumptions regarding the future of our business, future plans and strategies, projections, anticipated events and trends, the economy, and other future conditions. Because forward-looking statements relate to the future, they are subject to inherent uncertainties, risks, and changes in circumstances that are difficult to predict and many of which are outside of our control. Our actual results and financial condition may differ materially from those indicated in the forward-looking statements, and therefore you should not rely on any forward-looking statements that we may make. Further information on risks that could affect Workday's results is included in our filings with the Securities and Exchange Commission which are available on the Workday investor relations webpage: www.workday.com/company/investor_relations.php

Workday assumes no obligation for, and does not intend to update, any forward-looking statements. Any unreleased services, features, functionality or enhancements referenced in any Workday document, roadmap, blog, our website, press release or public statement that are not currently available are subject to change at Workday's discretion and may not be delivered as planned or at all.

Customers who purchase Workday services should make their purchase decisions based upon services, features, and functions that are currently available.



Laurent Homeyer

Strategic Industry Advisor, Retail
and Hospitality

Workday



Marcus Beaver

UKI Country Leader

Alight Solutions

Going Through an Unprecedented Acceleration



**The Future of Retail is
More Hybrid Than
Ever Before**



**Accelerated Digital
Adoption**



**Labor Shortage &
Battle for Talent
Impacting Retailers**



**Increased Margin
Pressures & Financial
Insolvency**



1480+

Retail, Consumer and
Hospitality Customers

550+

Retail, Consumer and Hospitality
Customers in EMEA



17M+

Industry workers use
Workday



#1

Industry for mobile app
adoption



PRIMARK



Pick n Pay



ASDA

dyson

Harrods

zalando



MANGO

franprix

Vinted



AUTODOC



R&H Community's Top Priorities



Experience

Mobile, modern, and
engaging and accessible
ATAWAD



Efficiency

Streamline, harmonise, and
automate to improve
efficiency



Insight

Democratise access to
reliable and real-time data



Agility

Adapt easily and quickly to
market context's changes

Workday Human Capital Management

Build a high performing organization



Employee Experience



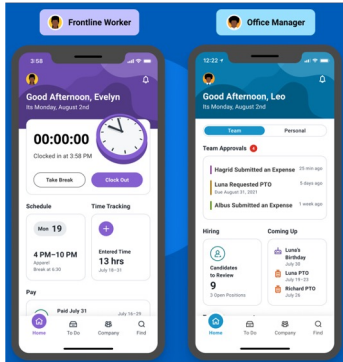
Recruit, Retain, Reskill



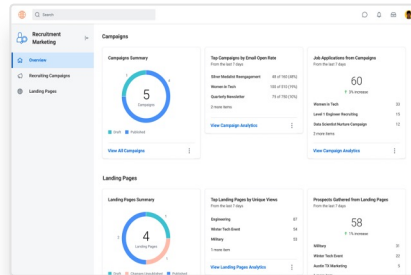
Optimize the Workforce



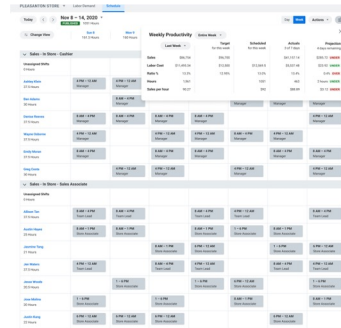
Diversity, Equity and Inclusion



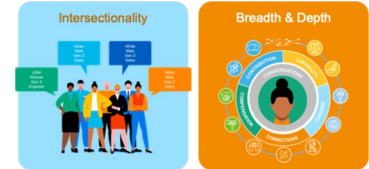
Mobile



Candidate Engagement



Scheduling and Labor Optimization



VIBE™



Laurent Homeyer

Strategic Industry Advisor, Retail
and Hospitality

Workday

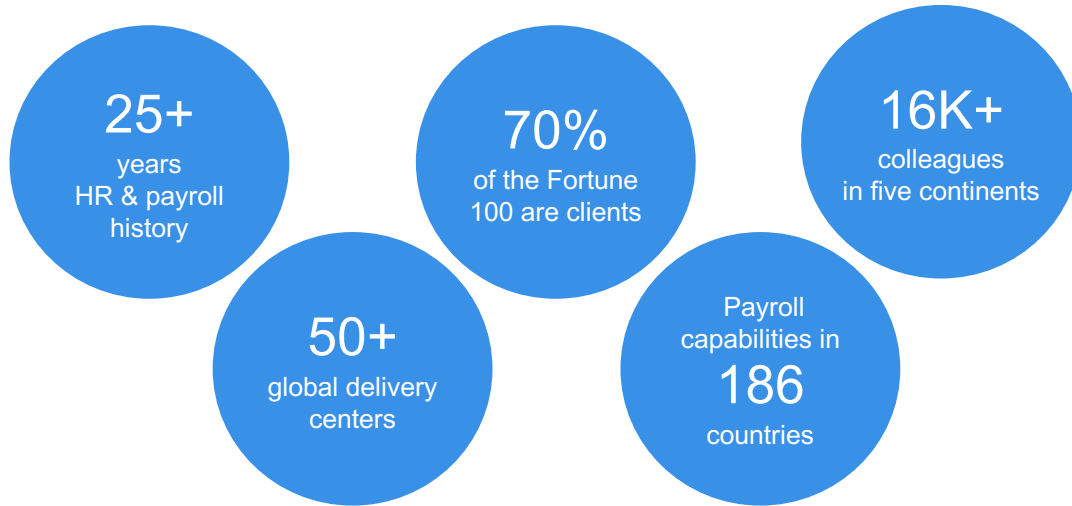


Marcus Beaver

UKI Country Leader

Alight Solutions

An introduction to Alight



Our Workday experience

1,000+

Workday deployments completed

450+

Workday optimization customers

200+

Workday Payroll deployments completed

100+

Workday customers who we operate on behalf of

We're ranked a leader by analysts!

Gartner

2021
Leader in Multi-Country
Payroll Solutions



2022
Leader in Cloud HR
Transformation Services



2021
Leader in
Multi-Country Payroll



2022
Leader in Workday
Ecosystem Services



2021
Leader in Workday
Services

FORRESTER

2021
Strong Performer in
Workday Partners

R&H Community's Top Priorities



Experience

Mobile, modern, and
engaging and accessible
ATAWAD



Efficiency

Streamline, harmonise, and
automate to improve
efficiency



Insight

Democratise access to
reliable and real-time data



Agility

Adapt easily and quickly to
market context's changes

Q&A

The background features a solid orange color with several overlapping circles in shades of orange and yellow on the right side, creating a modern, abstract design.



Thank you!